



Grinding Wheels

GF01 SERIES BR385

Grinding wheels that realize high quality glass grinding

The BR385 bond realizes quality glass grinding by employing a newly developed resin bond.

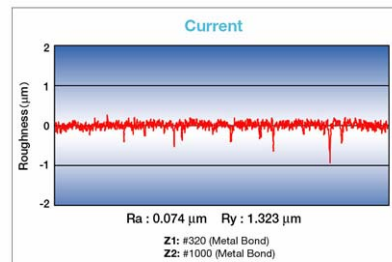
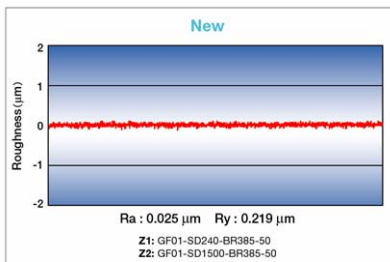
A bond specifically designed to grind glass has been added to DISCO's grinding wheel line-up. By employing the BR385 bond for rough and finish grinding, it is possible to carry out high quality grinding of fine surfaces. It also realizes continuous stable grinding since intermediate dressing is not necessary.

- High quality glass grinding is possible
- Stable grinding without intermediate dressing is possible
- Employing the new wheel base (GF01) enables efficient supply of grinding water.



■ Roughness

A higher quality finished surface is obtainable compared to existing wheels.

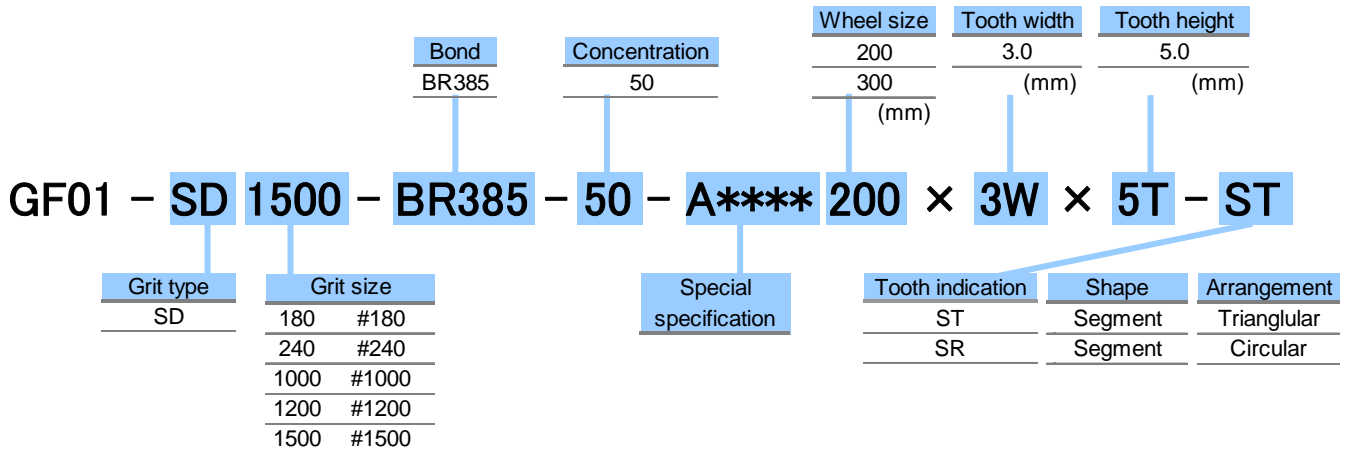


Workpiece : 6-inch diameter borosilicate glass

Applications

Borosilicate glass, Non-alkali glass, Crystal, Various glass types, etc.

Specifications

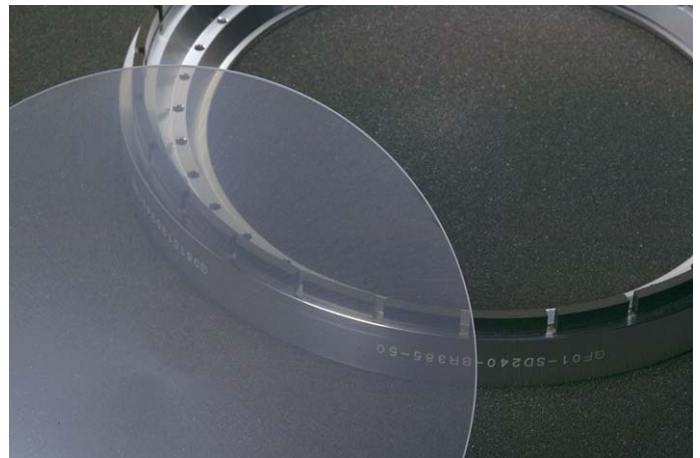


Experimental Data

A higher quality finished surface is obtainable compared to existing wheels.
The difference between the grinding wheels can be clearly seen in the two photographs below.



New



Current

Workpiece : 6-inch diameter borosilicate glass

When ordering

Please contact a DISCO representative with your product needs such as type, wheel size, and quantity.

When you place the first order with us, please explain application information such as materials to grind, sizes, machine, type, and other specification.

We are ready to help you to determine which is our most appropriate product type for your application.

Due to improvements in our products, it is possible that product specifications may be changed without advanced notice.

Please confirm the product specifications with a DISCO representative.



To use these DISCO blades and wheels (hereafter precision tooling) safely... Please read carefully and follow the instructions below to prevent any accidents or injuries.

- USE a safety cover (nozzle case, cover), equipped as a standard accessory, to avoid injury.
- DO NOT EXCEED the specified rpm limit indicated on the precision tooling.
- FOLLOW the instruction manual of the equipment to mount the precision tooling properly.
- DO NOT DROP OR HIT the precision tooling. This may cause breakage or injury.
- Always CHECK the precision tooling for chipping or any other damage before starting to use it. DO NOT USE the tooling if there is any damage.
- READ the operation manual of the cutting/grinding equipment before use.
- DO NOT USE the precision tooling with modified or customized equipment.
- DO NOT USE precision tooling that has a different size from the one recommended for your equipment.
- DO NOT USE the precision tooling for any other purpose than grinding, cutting, or polishing.
- Always USE water or coolant to prevent precision tooling damage.