

# Automatic Dicing Saw DAD3241

## Standard manual dicing saw for ø8-inch workpieces

### Compact manual dicing saw with the world's smallest class footprint

The DAD3241 is a distinctly compact manual dicing saw with support for ø8-inch workpieces at a width of only 650 mm. The DAD3241 realizes the world's smallest class footprint as ø8-inch dicing saw.

### High productivity

- Improved throughput through the introduction of servo motors on all axes (X, Y, and Z)

	Existing equipment (DAD3240)	DAD3241
X-axis	600	800
Y-axis	170	200
Z-axis	80	80

(mm/s)

- Improved index accuracy through the installation of a Y-axis scale as standard
- Enhanced communication control and software functions by installation of a PC
- Improved measurement accuracy and measurement time using a new NCS (Non-Contact Setup) sensor

### Support for large workpieces

- Installation of a JIG chuck table makes processing square workpieces up to 8 x 8 inches possible (option).



### Ease of operation

- XIS (Extended Interface System)**  
Operation buttons are consolidated on the microscope screen.
- Wafer mapping**  
The processing status is displayed visually in the same way as fully automatic equipment.
- Log viewer**  
Analog data is displayed in a graph and equipment data is more easily visualized.
- Help viewer**  
Troubleshooting is displayed when an error occurs to achieve quick and accurate recovery support.

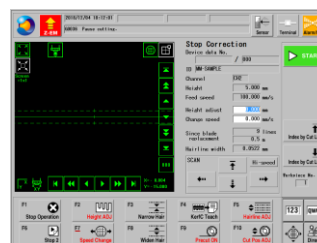
### High processability

Thanks to the high-output 1.8 kW spindle, the DAD3241 can handle difficult-to-cut materials from silicon to ceramics.

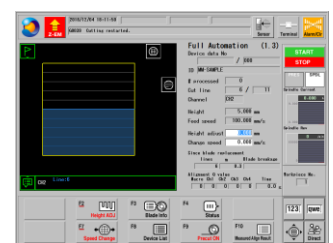
### High maintainability

Built-in microscope with a lens shutter and scope blow function reduces maintenance frequency, which increases the utilization rate.

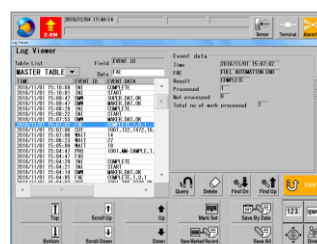
### ◆ Operation interface



XIS



Wafer Mapping



Log Viewer



Help Viewer

**Specifications**

Specification		Unit	
Workpiece size		-	φ 8" (□250 DPR)
X-axis	Cutting range	mm	210
	Cutting speed	mm/sec	0.1 ~ 800
Y-axis	Cutting range	mm	210
	Index step	mm	0.0001
	Index positioning accuracy	mm	0.002/210 (Single error)0.002/5
Z-axis	Max. stroke	mm	32.2
	Moving resolution	mm	0.00002
	Repeatability accuracy	mm	0.001
θ-axis	Max. rotating angle	deg	320
Spindle	Output	kW	1.8
	Rated torque	N·m	0.29
	Revolution speed range	min <sup>-1</sup>	6,000~60,000
Machine dimensions(W × D × H)		mm	650 × 950 × 1,670
Machine weight		kg	Approx.550

**■ Environmental Conditions**

- \*Use clean, oil-free air (dew point between -10 - -20 , residual oil: 0.1 ppm, and filtration rating: 0.01μm/99.5 % or more).
- \*Keep room temperature fluctuations within ±1°C of the set value. (Set value should be between 20 - 25 °C).
- \*Keep cutting water and cleaning water 2 °C above room temperature (fluctuations within ±1 °C).
- \*The machines should be used in an environment, free from external vibration. Do not install machine near a ventilation opening, heat generation equipment or oil mist generating parts.
- \*This machine uses water. In case of water leakage, please install the machine on the floor with sufficient waterproofing and drainage treatments.
- \* All pressures specified above are gauge pressures.
- \* As the above specification may change due to technical modifications.  
Please confirm when placing your order.
- \* For further information, please contact your local sales representative.